

PATNA DAIRY PROJECT

Feeder Balancing Dairy Complex, Phulwarisharif, Patna-801505
Ph: 0612- 2251622, 2252553, 2252542; Fax No.- 0612-2250325
Email Id.- vpmu.pur@gmail.com

PDP: PUR: FBD 4244

DATE-10.09.2024

Dear Sir,

We are interested for demolition/construction of civil work for renovation of our conference hall at our H.Q. Patna Dairy Project, Phulwarisharif, Patna. Details scope of work is as per enclosed sheet page - 1 to 3. Existing diagram with wall demolition layout of conference hall- related - page no. 4. Proposal of renovation plan for wall erection is also enclosed- page no.- 5.

Interested party may submit their offer in sealed envelope on printed letter head with GST & PAN details who have at least three year experience in the field of consultation/designing/Engineering services/Interior decoration & civil construction etc. latest by 30.09.2024, 5 P.M.

Bidder must have registered with any Govt. agency/COMFED or completed prestigious projects earlier.

Paper to be enclosed : (i) GST & PAN detail.

- (ii) At least three Work completion certificate in last three year of same nature of work.
- (iii) Registration in Govt. agency/company or completed prestigious projects of above **50 lakh**.

Thanking you

Your faithfully

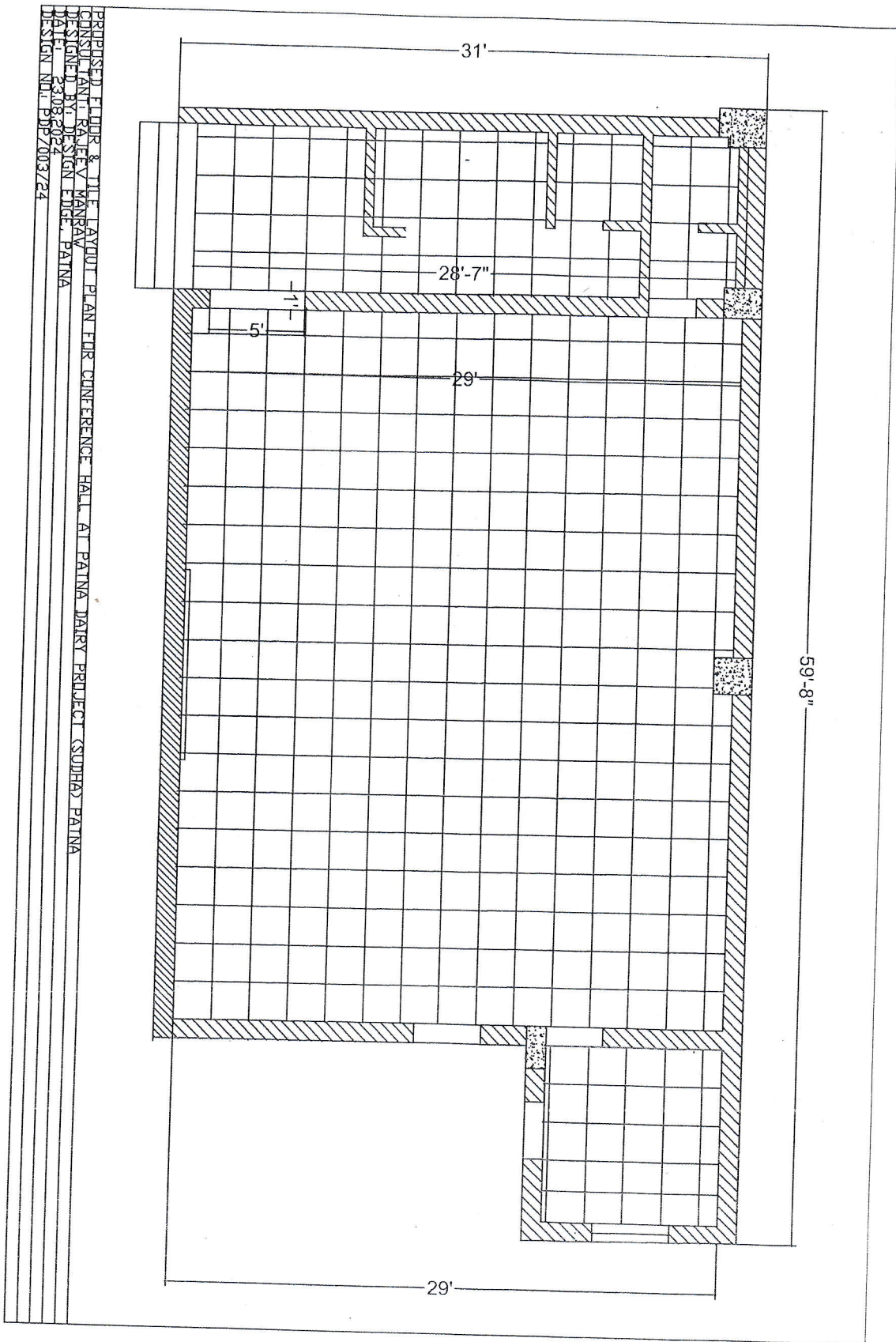


Manager(MM)

Civil construction work and renovation of conference hall at Patna Dairy Project - f				
Sr.	BSR-22	Description of Works	Unit	Quantity
1	15.12	Dismantling doors, windows and clerestory windows (steel or wood) shutters including chowkhats, architrage, holdfasts etc. complete and stacking within 50 meters lead:		
a	15.12.1	Of area 3 sqm and below	Each	11
b	15.12.2	Of area beyond 3 sqm	Each	
2	15.7.4	Demolishing brick work including stacking of serviceable material and disposal of unserviceable material within 50 meters lead: In cement mortar.	Cum.	15.25
3	15.23.1	Dismantling tile work in floors and roofs laid in cement mortar including stacking material within 50 meters lead. For thickness of tiles 10 mm to 25 mm	Sqm	181.32
4	15.44.1	Dismantling G.I. pipes UPVC Pipe (external work) including excavation and refilling trenches after taking out pipes, manually/ by mechanical means including stacking of pipes within 50 meters lead as per direction of Engineer-in-charge : 15mm to 40mm nominal bore per	Per Mtr.	75
5	15.52	Dismantling of flushing cistern, water closet, wash basin etc of any size including stacking of useful materials near the site and disposal of unserviceable materials within 50 meters lead.	Each	9
6	15.55	Dismantling of cement concrete platform along with curtain wall and base concrete etc. including stacking of useful materials near the site and disposal of unserviceable materials within 50 meters lead.		
a		120x120 cm (Outside to outside)	Nos	2
b		210x120 cm (Outside to outside)	Nos	2
c		320x120 cm (Outside to outside)	Nos	1
7	15.56	Dismantling old plaster or skirting raking out joints and cleaning the surface for plastering including disposal of rubbish to the dumping ground within 50 meters lead.	SQM	181.32
8	15.57	Dismantling aluminium, gypsum partitions, doors, windows, fixed glazing and false ceiling including disposal of unserviceable surplus material and stacking of serviceable material with 50 meters lead as directed by engineer-in-charge.	SQM	23.94
9	6.1.14A+ 6.3A	Brick Work with bricks of class designation 100A in super structure with cement mortar 1:6 (1 cement : 6 coarse sand) + extra for brick work in super structure above plinth level upto floor V	Cum	19.70
10	11.72	Providing designation 100 A one brick flat soiling joints filled with local sand including cost of watering, taxes, royalty all complete as per building specification and direction of E/I	SQM	12.0
11	13.12.2	15 mm cement plaster of mix: Cement plaster in course sand 1:4 (1 cement : 4 coarse sand)	SQM	47.87
12	4.1	Providing and laying in position cement concrete of specified grade excluding the cost of centring and shuttering-all work upto plinth level		
a	4.1.3	1:2:4 (1 cement : 2 coarse sand : 4 graded stone aggregate 20 nominal size)	Cum	3.92

13	12.5	Providing and fixing predated galvanised iron profile sheets (size, shape and pitch corrugation as approved by engineer-in-charge) 0.50 mm (+0.05%) total coated thickness with zinc coating 120gms per sqm as per IS: 277, in 240 map steel grade, 5-7 microns epoxy primer on both side of the sheet and polyester top coat 15-18 microns. Sheet should have protective guard film of 25 microns minimum to avoid scratches during transportation and should be supplied in single length upto 12 meters or as desired by engineer-in-charge. The sheet shall be fixed using self drilling/self tapping screws of size (5.5x55mm) with EPDM seal, complete upto any pitch in horizontal/ vertical or curved surfaces, excluding the cost of purlins, rafters and trusses and including cutting to size and shape wherever required.	SQM	14
14	10.16.1	Steel Work in built up tubular (Round, Square or Rectangle hollow tubes etc.) trusses etc., including cutting, hoisting, fixing in position and applying a priming coat of approved steel primer, including welding and bolted with special shaped washers etc. complete	KG	377
15	11.41	Providing and laying vitrified tiles in floor in different sizes {thickness to be specified by the manufacturer} with water absorption less than 0.08% and confirming to IS: 15622, of approved brand & manufacturer, in all colours and shade, laid on 20mm which cement mortar 1:4 (1 cement:4 coarse sand) jointing with gray cement slurry @3.3 kg/sqm including grouting the joints with white cement and matching pigments etc. complete		
a	11.41.4	size of tiles 100x100 cm	SQM	132.35
16	11.46	Providing and laying Vitrified tiles in floor in different sizes {thickness to be specified by the manufacturer} with water absorption less than 0.08% and confirming to IS: 15622, of approved brand & manufacturer, in all colours and shades, in skirting and riser of steps over bed of 12mm thick bed of cement mortar 1:3 (1 cement:3 coarse sand) including grouting of joints with white cement and matching pigment etc. complete		
a	11.46.4	size of tiles 100x100 cm	SQM	7.15
b	11.41.A	Providing and laying vitrified tiles in floor in different sizes {thickness to be specified by the manufacturer} with water absorption less than 0.08% and confirming to IS: 15622, of approved brand & manufacturer, in all colours and shade, laid on 20mm which cement mortar 1:4 (1 cement:4 coarse sand) jointing with gray cement slurry @3.3 kg/sqm including grouting the joints with white cement and matching pigments etc. The tiles must be cut with zero chipping diamond cutter only. Laying of tiles will be done with the notch towel, piled, wedges, clips of required thickness, levering systems and rubber mallet for placing the tiles gently and easily		
c	11.41A.1	double charged vitrified tiles polished finish of size		
d	11.41A.1.1	size of tiles 600x600mm	SQM	54.24
17	8.2	Providing and fixing 18 mm thick gang saw cut, mirror polished, remoulded and pre polished, machine cut for kitchen platforms, vanity counters, windows sills, facias and similar locations, of required size, approved shade, colour and texture laid over 20mm mixed with matching pigment, epoxy touch ups, including rubbing, curing, moulding and polished to edges to give high gloss finish etc. Complete at all levels.		
a	8.2.2.2	Area of slab over 0.50 sq mtr.	SQM	11.46
18	8.3	Providing edge moulding to 18mm thick marble stone counters, vanities etc., including machine polishing to edge to give high gloss finish etc. complete as per design approved by engineer-in-charge	SQM	25.98

19	8.4	Extra for fixing marble/ granite stone over and above corresponding basic item in facia and drops of width upto 150mm with epoxy resin based (araldite) or equivalent adhesive including cleaning etc.	M	33.2
20	26.86	Providing and fixing factory made single extruded WPC (wood polymer composite) solid door/window/ceosetory windows & other frame/chowkhat comprising if virgin PVC polymer of K value 58-60 (suspension grade), calcium carbonate and natural fibers (wood powder/rice husk/wheat husk) and non toxic additives (maximum toxicity index of 12 for 100gms) fabricated with miter joints after applying PVC solvent cement and screwed with full body threaded star headed SS screws having minimum frame density of 750kg/cum, screw withdrawak strength of 2200 N (face) & 1100 N (edge), minimum compressive strangth of 58 N/mm, modulus of elasticity 900 N/mm and resistance to spread of frame of class A category with property of being termite/borer proff, water/moisture proof and fire retardent and fixed in position with M.S hold fast/lugs/SS dash fasteners of required dia and length complete as per direction of Engineer-in-Charge. (M.S hold fast/lugs or SS dash fasteners shall be paid for separately).		
a	26.86.5	Frame size 65x100mm	M	37.27
		Total		



EXISTING PLAN WITH WALL DEMOLITION LAYOUT PLAN FOR CONFERENCE HALL AT PATNA DAIRY PROJECT (SUDDHAY PATNA)
 CONSULTANT: RAJEEV KANBAY/
 DESIGNED BY: DESIGN ENGINEER, PATNA
 DATE: 23/08/2024
 DESIGN NO.: B/P/2001/24

